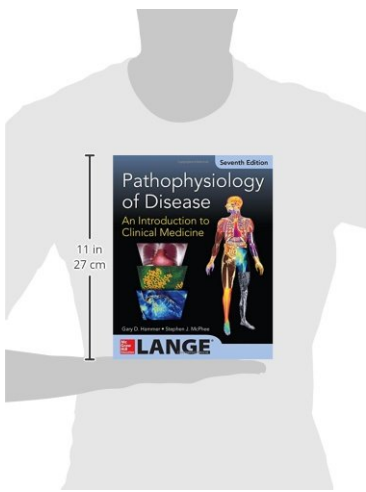


[PDF] Pathophysiology Of Disease: An Introduction To Clinical Medicine 7/E

Gary D. Hammer, Stephen J. McPhee - pdf
download free book



Books Details:

Title: Pathophysiology of Disease: A
Author: Gary D. Hammer, Stephen J. M
Released:
Language:
Pages: 784
ISBN: 0071806008
ISBN13: 9780071806008
ASIN: 0071806008

[**CLICK HERE FOR DOWNLOAD**](#)

pdf, mobi, epub, azw, kindle

Description:

**A full-color, case-based review of the essentials of pathophysiology--
covering all major organs and systems**

The goal of this trusted text is to introduce you to clinical medicine by reviewing the pathophysiologic basis of 120 diseases (and associated signs and symptoms) commonly encountered in medical practice. The authors, all experts in their respective fields, have provided a concise review of relevant normal structure and function of each body system, followed by a description of the pathophysiologic mechanisms that

underlie several common diseases related to that system.

Each chapter of *Pathophysiology of Disease* concludes with a collection of case studies and questions designed to test your understanding of the pathophysiology of each clinical entity discussed. These case studies allow you to apply your knowledge to specific clinical situations. Detailed answers to each case study question are provided at the end of the book. This unique interweaving of physiological and pathological concepts will put you on the path toward thinking about signs and symptoms in terms of their pathophysiologic basis, giving you an understanding of the "why" behind illness and treatment.

Features

- 120 case studies (9 new) provide an opportunity for you to test your understanding of the pathophysiology of each clinical entity discussed
- Checkpoint questions provide review and appear in every chapter
- Updates and revisions throughout this new edition reflect the latest research and developments
- Numerous tables and diagrams encapsulate important information
- Updated references for each chapter topic

Pathophysiology of Disease is a true must-have resource for medical students preparing for the USMLE Step 1 exam, as well as students engaged in their clerkship studies. House officers, nurses, nurse practitioners, physicians' assistants, and allied health practitioners will find its concise presentation and broad scope a great help in facilitating their understanding of common disease entities.

- Title: Pathophysiology of Disease: An Introduction to Clinical Medicine 7/E
 - Author: Gary D. Hammer, Stephen J. McPhee
 - Released:
 - Language:
 - Pages: 784
 - ISBN: 0071806008
 - ISBN13: 9780071806008
 - ASIN: 0071806008
-

Pathophysiology, clinical pathophysiology with the basics of the organization of students' independent work. Study Guide for Foreign Students of the English-Speaking Medium of Medical Universities/ authors: E.V. Schetinina, M.Yu. Wafiadi, G.G. Petrosyan, N.G. Radzievskaya, L.D. Erkenova, L.A. Parazyan, Yu.Yu. Name of the lesson: Introduction. Pathological physiology as a medical discipline. Relevance of the topic. Currently, there are about a thousand different nomenclature forms of diseases. A practical doctor seeks to differentiate one disease from another, to make a correct diagnosis and to prescribe a rational decision. Pathophysiology is the study of the disturbance of normal mechanical, physical, and biochemical functions, either caused by a disease, or resulting from a disease or abnormal syndrome or condition that may not qualify to be called a disease. An alternate definition is "the study of the biological and physical manifestations of disease as they correlate with the underlying abnormalities and physiological disturbances. This lecture-note will provide a summarized basis for the students by expanding the student's knowledge in the sciences how alteration in structure (Anatomy) and function (Physiol... In this text of pathophysiology, every attempt has been made to provide the most current available information in simplified and well-explained ways. ii. Introduction to Pathophysiology. as an integrating medical discipline. Pathophysiology – what is it about? Definition of health vs. disease/illness Etiology and pathogenesis of disease Problem how to define normality in medicine. Pathophysiology (PP) as a medical discipline. – medical science dealing with the study of disease, in particular how the disease develops and progresses (i.e. aetiology and pathogenesis) and also how the cells, tissues, organ systems and whole body react in time (i.e. adaptation and compensation). pathophysiology is inductive clinical medicine is deductive. Natural history of disease. – refers to the progression of a disease process in an individual over time in the absence of treatment. – this is how the PP is usually taught. Pathophysiology is the part of medicine and biology which investigates and describes actual causes, mechanisms and regularities of onset, development and outcomes of pathological process and disease; formulates principles and methods of their diagnostics, treatment and prophylaxis; develops the doctrine of a disease and an ailing body; formulates theoretical guidelines in medicine and biology. The above is presupposed by the etymology of the term «pathophysiology»: from Greek pathos – suffering, illness; physis – nature, essence; logos – doctrine, science. In other words, pathophysiology is th... The object of pathophysiology studying and teaching covers the following three components (fig. Pathophysiology of Diseases has been added to your Cart. Add to Cart. Buy Now. The goal of this trusted text is to introduce you to clinical medicine by reviewing the pathophysiologic basis of 120 diseases (and associated signs and symptoms) commonly encountered in medical practice. The authors, all experts in their respective fields, have provided a concise review of relevant normal structure and function of each body system, followed by a description of the pathophysiologic mechanisms that underlie several common diseases related to that system. Each chapter of Pathophysiology of Disease concludes with a collection of case studies and questions designed to test your und

Each chapter of Pathophysiology of Disease concludes with a collection of case studies and questions designed to test your understanding of the pathophysiology of each clinical entity discussed. These case studies allow you to apply your knowledge to specific clinical situations. Detailed answers to each case study question are provided at the end of the book. This unique interweaving of physiological and pathological concepts will put you on the path toward thinking about signs and symptoms in terms of their pathophysiologic basis, giving you an understanding of the "why" behind illness and t a LANGE medical book Pathophysiology of Disease: An Introduction to Clinical Medicine Seventh Edition Edited by Gary D. Hammer, MD, PhD Millie Schembechler Professor of Adrenal Cancer Director, Center for Organogenesis Director, Endocrine Oncology Program Comprehensive Cancer Center University of Michigan Ann Arbor, Michigan Stephen J. McPhee, MD Professor of Medicine, Emeritus Division of General Internal Medicine Department of Medicine University of California.Â ISBN: 978-0-07-180601-5 MHID: 0-07-180601-6 The material in this eBook also appears in the print version of this title: ISBN: 978-0-07-180600-8, MHID: 0-07-180600-8. eBook conversion by codeMantra Version 2.0 All trademarks are trademarks of their respective owners. clinical-anatomical conference and medical-control commission; iatrogenic reactions and diseases; pathomorphosis etc. This text-book is intended for English medium students of the faculties of general medicine, preventive medicine, pediatrics and dentistry and correspond the syllabus of biopsy-autopsy course approved by Central Methodological Office for Higher Education of the Ministry of Health of Ukraine.Â Introduction to pathology. Pathology is the foundation of medical practice. Without pathology the practice of medicine would still rely on myths and folklore. Pathology is the scientific study of disease.Â Clinical medicine is based on a longitudinal approach to a patientâ€™s illness â€“ the patientâ€™s history, the examination and investigation, the diagnosis, treatment. Pathophysiology, clinical pathophysiology with the basics of the organization of students' independent work. Study Guide for Foreign Students of the English-Speaking Medium of Medical Universities/ authors: E.V. Schetinin, M.Yu. Wafiadi, G.G. Petrosyan, N.G. Radzievskaya, L.D. Erkenova, L.A. Parazyan, Yu.Yu.Â Name of the lesson: Introduction. Pathological physiology as a medical discipline. Relevance of the topic.Â Currently, there are about a thousand different nomenclature forms of diseases. A practical doctor seeks to differentiate one disease from another, to make a correct diagnosis and to prescribe a rational decision.